



LEAVES FROM THE ANNALS

This space is inspired by and celebrates the rich archives of the Convent, in particular the Annals in which key events in the

Sisters' lives were recorded. Stretching over every inch of the walls are framed documents from the Archives. The documents, fascinating in their own right, can be explored in great detail using the touchscreen interface. This interface allows you to zoom in on an item of interest, read its background story and see where it fits into the wider story of Bermondsey.

MERCY SPIRITUALITY AND MINISTRY

In the Chapel, *Mercy Spirituality and Ministry* focuses on the faith which inspires everything the Sisters are

and do. You are welcome to sit, rest and pray here, perhaps contemplating the beautiful glass screen etched with illustrations of the Corporal and Spiritual Works of Mercy. The changing ministries of the Sisters are represented by the objects on display. They show that though the Sisters' lifestyles

have adapted to meet the needs of the world today, the spirit of Mercy remains constant.

'Over the past 40 years I have on many occasions had help and support from the Sisters of Mercy at Dockhead. The chapel is a haven of peace and tranquillity and everyone is made welcome by the Sisters.'

Bermondsey Parishioner



Find out more about the Institute of Our Lady of Mercy, about Sisters of Mercy worldwide and about our foundress, Catherine McAuley by visiting our website http://www.mercyworld.org/countries/great_britain/institute.asp

GETTING TO THE CONVENT

Convent of Mercy, Parker's Row
London SE1 2DQ
TEL 0207 231 6175

London Underground Jubilee Line to Bermondsey
Buses 47, 188, 381



**'We should be as the compass
that goes round its circle without
stirring from its centre – our centre
is God, from whom all our actions
should spring as from their source.'**

Catherine McAuley

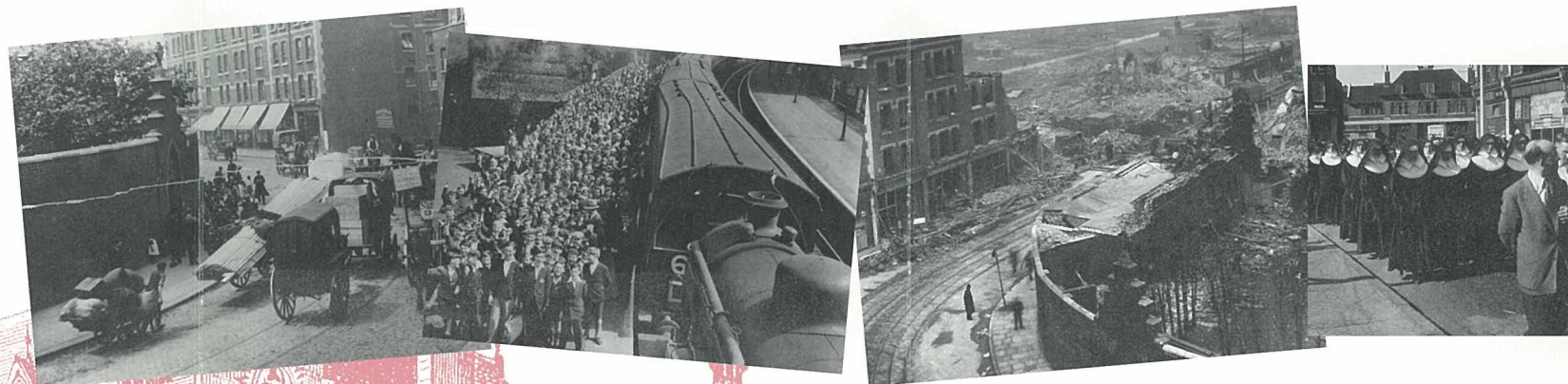
The Convent occupies a special place in Mercy history as the first foundation established outside Ireland. Much has happened since 1839 when Mother Catherine McAuley led the founding party to Bermondsey. She stayed for almost two months, giving practical help and spiritual guidance to the first Sisters of the Convent.

Explore Catherine's legacy through the eyes and experiences of the Sisters of the Bermondsey Convent. Witness the close relationship between the Sisters and the local people in *On the Doorstep*; find the name of every Sister who entered the Convent in *Lived Lives*; explore the extensive archives of the Convent in *Leaves from the Annals*; meditate on *Mercy Spirituality and Ministry* in the Chapel.

ON THE DOORSTEP

This exhibition area, closest to the actual doorstep, looks at Bermondsey's history from the 1830s to the present day, and shows how the Sisters have responded to the changing needs of the community. Four multimedia 'scrapbooks' paint a picture of life in Bermondsey at four key moments in the Convent's history: *When the Sisters Arrived*, *Golden Jubilee*, *World War II* and *The New Convent*.

Trace changes in the Sisters' daily lives through the objects on display, from the original Accounts Book of the Convent to a Second World War identity card. Sit and listen to the evocative stories of the Sisters and their interaction with the local people.



LIVED LIVES

Mother Clare Moore's portrait hangs in the passage between Doorstep and Chapel. She, more than anyone, embodies the spirit of Bermondsey; her life was dedicated to offering practical help to the poor and sick, which she did with warmth, wit and wisdom. Her portrait is mirrored by a 'virtual' portrait of some of the significant women who guided the Convent over the years. Framing these portraits are the names of all the Sisters who entered the Convent.

